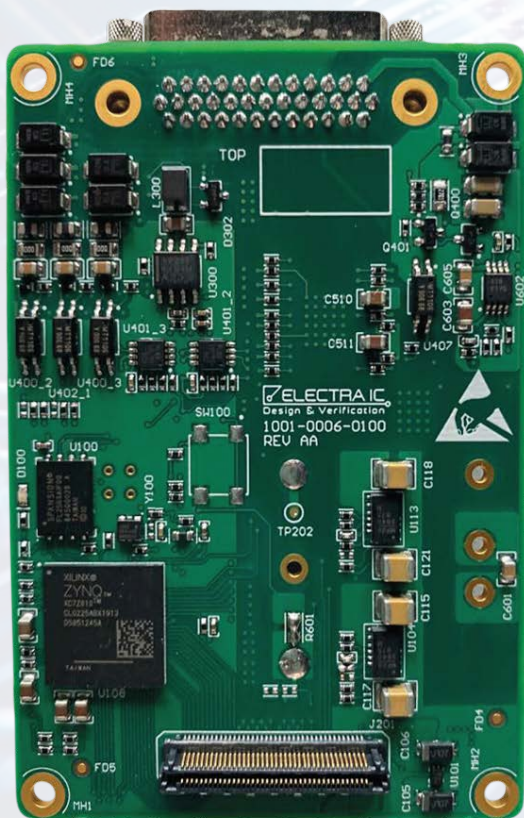


MIL-STD-1553 BOARD with Ethernet

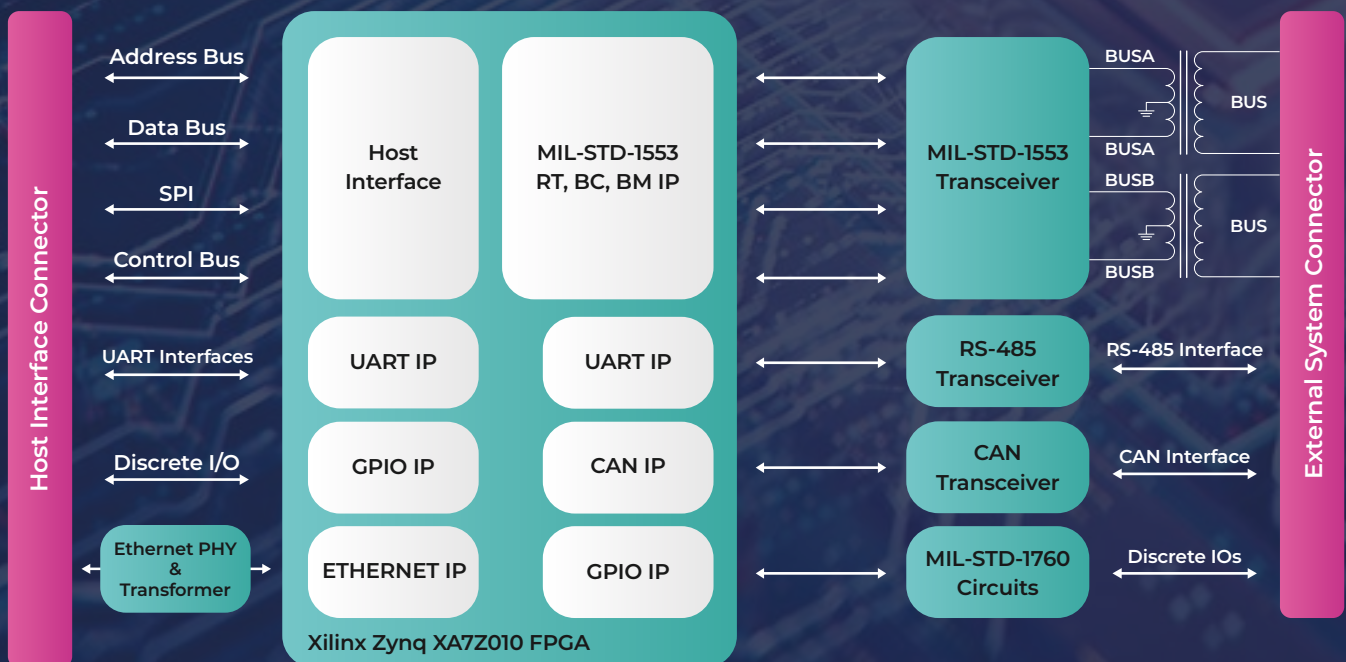


Features

- Complete Dual-Redundant MIL-STD-1553B Bus transceiver and transformer
- Simultaneously configurable MIL-STD-1553 BC, RT, BM modes
- Host Interface
 - Synchronous/Asynchronous Parallel Interface
 - SPI Interface
 - Ethernet Interface
- Up to 32K words static RAM with RAM Error Detection/Correction option
- A comprehensive built-in self-test
- MIL-STD-1760 compatible busy bit response time support
- MIL-STD-1760 compatible discrete signals
- CAN bus interface
- RS-485 interface
- Less than 0.3W maximum power dissipation during transmission (2.4W on load)
- 57mm x 84mm small form factor
- Industrial operating temperature of -40°C to +85°C ambient
- 28VDC or 3.3VDC supply
- RoHS Compliant

BLOCK DIAGRAM

MIL-STD-1553 BOARD with ETHERNET



electraic



www.electraic.com



info@electraic.com



+90 216 912 0167